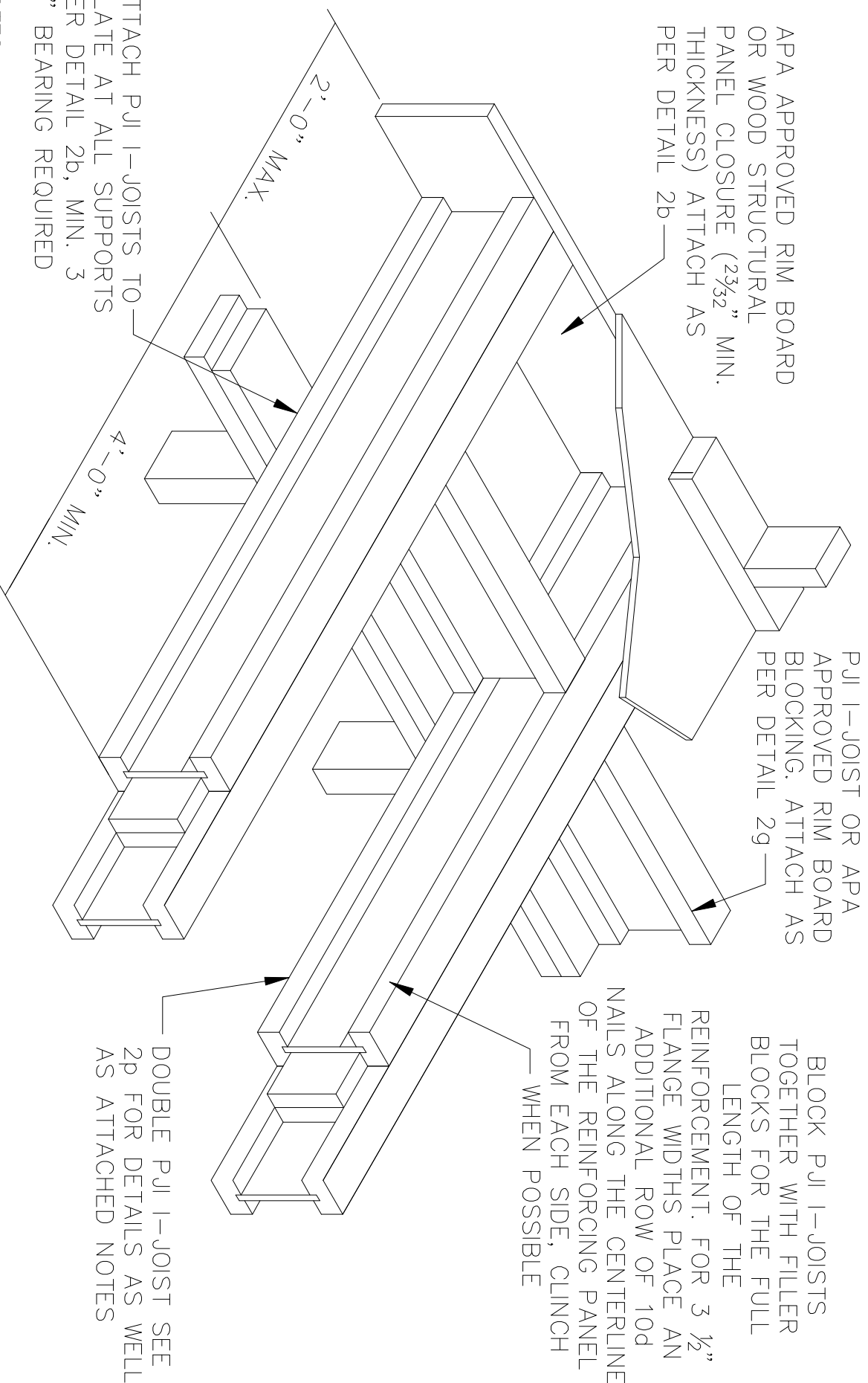


METHOD 3 - DOUBLE PJI JOISTS



PJI I-JOIST OR APA APPROVED RIM BOARD BLOCKING. ATTACH AS PER DETAIL 29

APA APPROVED RIM BOARD OR WOOD STRUCTURAL PANEL CLOSURE (2 3/32" MIN. THICKNESS) ATTACH AS PER DETAIL 2b

BLOCK PJI I-JOISTS TOGETHER WITH FILLER BLOCKS FOR THE FULL LENGTH OF THE REINFORCEMENT. FOR 3 1/2" FLANGE WIDTHS PLACE AN ADDITIONAL ROW OF 10d NAILS ALONG THE CENTERLINE OF THE REINFORCING PANEL FROM EACH SIDE, CLINCH WHEN POSSIBLE

DOUBLE PJI I-JOIST SEE 2p FOR DETAILS AS WELL AS ATTACHED NOTES

ATTACH PJI I-JOISTS TO PLATE AT ALL SUPPORTS PER DETAIL 2b, MIN. 3 1/2" BEARING REQUIRED

2'-0" MAX.

4'-0" MIN.

- NOTES:**
1. SUPPORT BACK OF PJI I-JOISTS WEB DURING NAILING TO PREVENT DAMAGE TO WEB/FLANGE CONNECTION.
 2. LEAVE 1/8" GAP BETWEEN TOP OF FILLER BLOCK AND TOP FLANGE OF I-JOIST.
 3. FILLER BLOCK IS REQUIRED BETWEEN JOISTS FOR FULL LENGTH OF SPAN.
 4. NAIL JOISTS TOGETHER WITH 2 ROWS OF 10d NAILS @ 12"c/c ON EACH SIDE (CLINCH WHEN POSSIBLE).
 5. TOTAL OF 4 NAILS PER/FT REQUIRED, IF NAILS CAN BE CLINCHED ONLY 2 NAILS PER/FT REQUIRED..